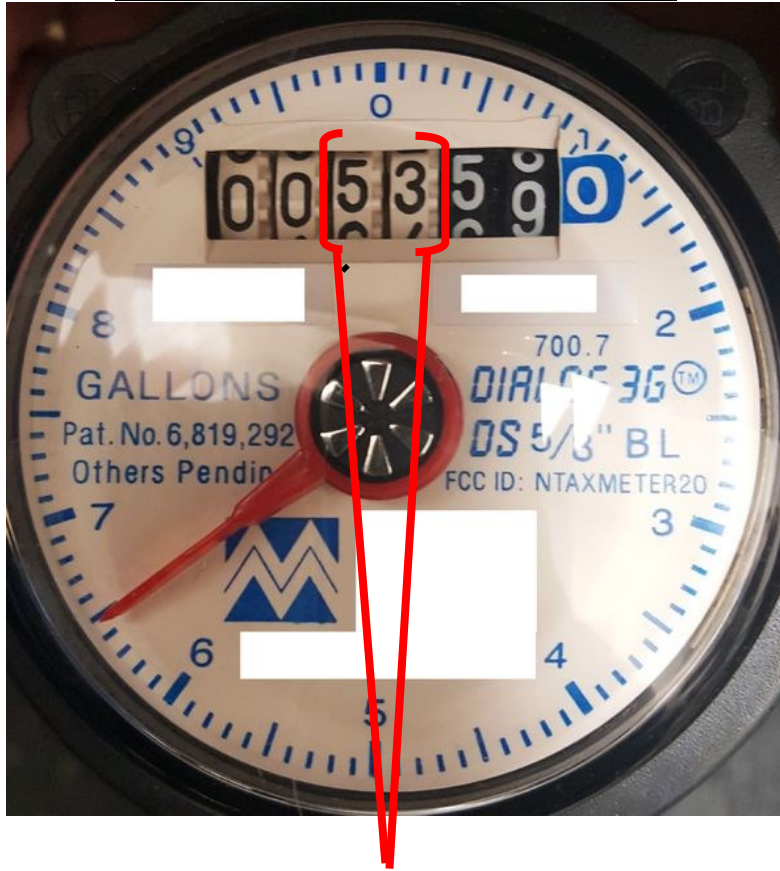


How to calculate your water bill

UTILITY BILLING

RATES

BASE Water(0-2) thou- sands of gallons -	\$ 11.87
Each additional 1,000 gallons used is—	\$ 4.59
BASE Sewer (0-2) thou- sands of gallons based off of WATER CONSUMPTION	\$ 11.87
Each additional 1,000 gallons used is —	\$ 4.94
Storm Water (state man- dated fee	\$ 1.45



Your meter should look something like this. There are a few variations but this is what a basic meter should look like.

Our meter readers read the numbers in WHITE. These are in THOUSANDS of gallons. Example above would read 53 on your water bill but numerically spoken is 53,000 (fifty-three thousand gallons)

So, to calculate billing correctly you would take the last read from your last bill. Let's say it was 47 (forty-seven thousand gallons) and your new read is now 53 (fifty-three thousand gallons).

$53 - 47 = 6$ (you have used 6,000 gallons of water since your last bill)
Our office bills by the 1,000 (not down to the exact gallon you used this would involve complicated math that could be misconstrued very easily)

Water Charge

First 2 (thousand gallons) water \$11.87 plus
4 (additional thousands gallons) x \$ 4.59 = \$18.36

Sewer Charge

First 2 (thousand gallons) sewer \$11.87 plus
4 (additional thousands of gallons based on water usage) x \$4 .94 = \$19.76

WATER / SEWER UTILITY BILL CALCULATIONS

	\$11.87
	+ \$18.36
Water TTL	\$ 30.23
	\$11.87
	+ \$19.76
Sewer TTL	\$ 31.63
	\$ 30.23
	+ \$31.63
	\$ 61.86
	+ \$ 1.45*
TTL	\$ 63.31
Utility Bill	
*Storm Water Fee	