

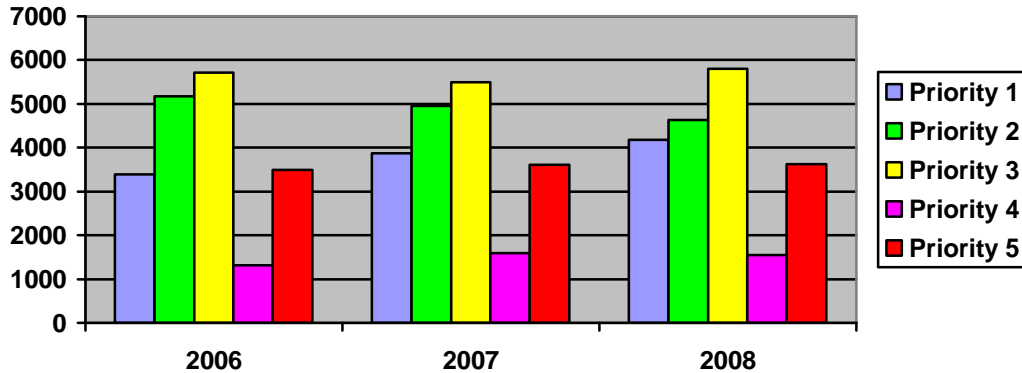
## Calls for Service

Total Calls for Service:

2006 – 19,122

2007 – 19,537

2008 – 19,817 (1.4% increase over 2007)



Examples:

Priority 1: Officer needs assistance; Major accidents; Crimes “in progress”

Priority 2: Prowlers; Alarms

Priority 3: Noise disturbances; Minor accidents

Priority 4: Barking dogs; Speeding vehicles; Not “in progress” crimes

Priority 5: Keys locked in a vehicle

Changes **in the number of calls for service** in 2008 compared to 2007 are as follows:

Priority 1: 8% **increase**

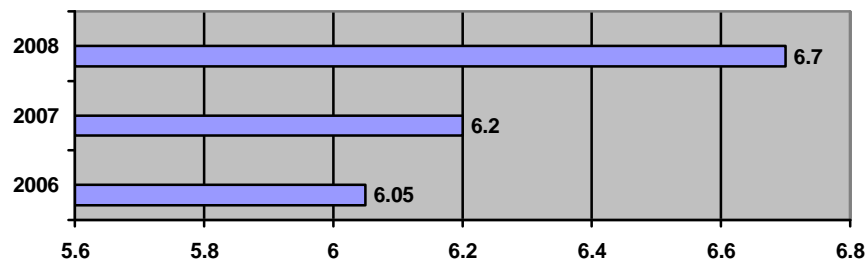
Priority 2: 7% **decrease**

Priority 3: 5% **increase**

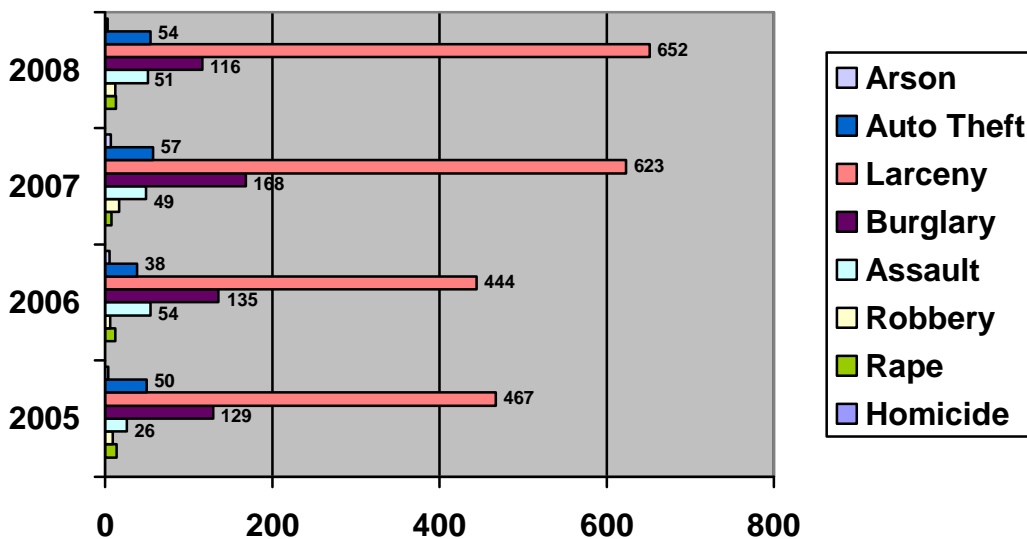
Priority 4: 2% **decrease**

Priority 5: no change

## Response Time in Minutes (Priority 1 Calls only)



## Part I Offenses

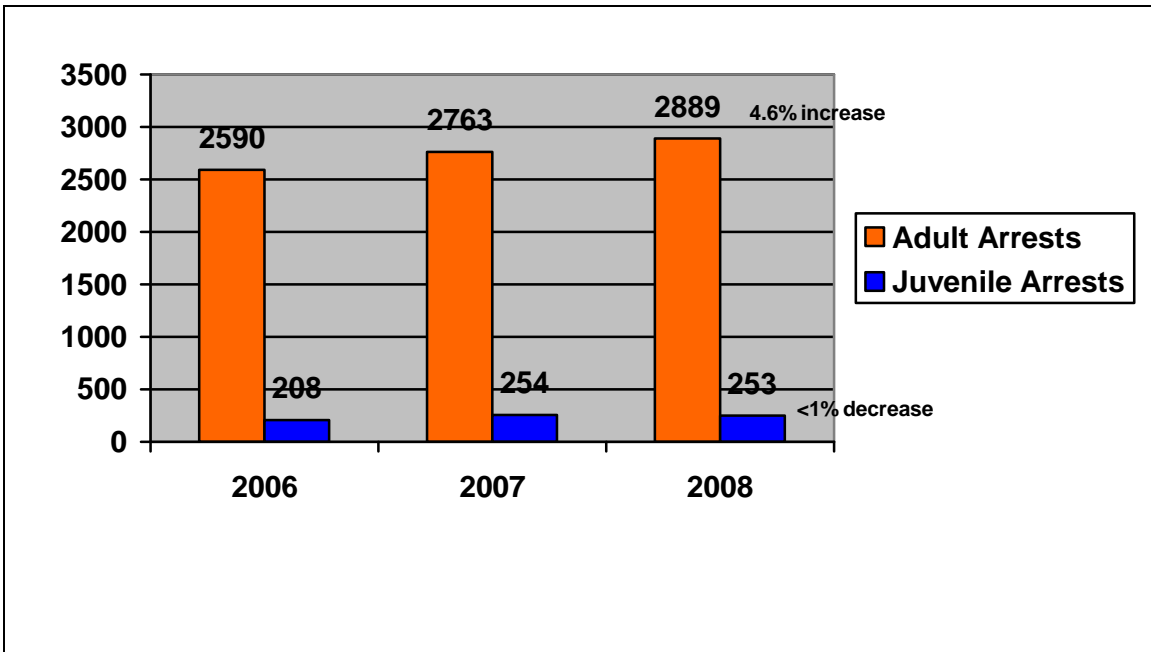


### 2008 Totals & Percentage of Change from 2007

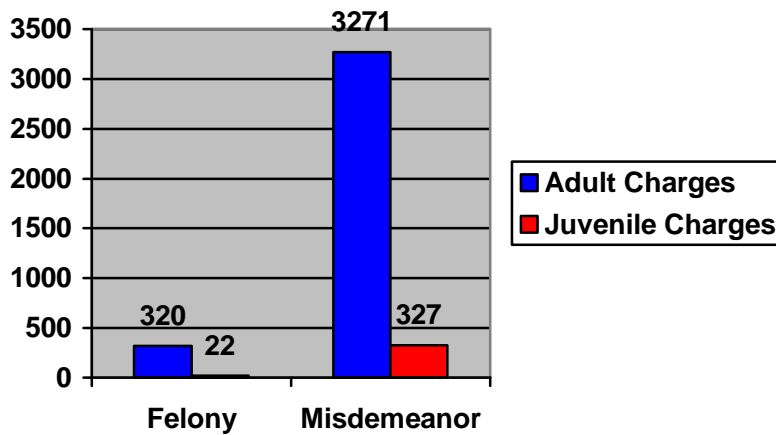
|            |     |                |
|------------|-----|----------------|
| Arson      | 3   | 57% decrease   |
| Auto Theft | 54  | 5% increase    |
| Larceny    | 652 | 5% increase    |
| Burglary   | 116 | 31% decrease   |
| Assault    | 51  | 4% increase    |
| Robbery    | 12  | 30% decrease   |
| Rape       | 13  | 63% increase   |
| Homicide   | 1   | non-calculable |

Part I Offenses are the eight offenses reported monthly to the Texas Department of Public Safety. The figures are then forwarded to the FBI for analysis. Finally, the statistics are published in a catalog titled "Crime in the United States" which is compiled by the United States Department of Justice and disseminated annually to all criminal justice agencies within the United States.

# Arrests



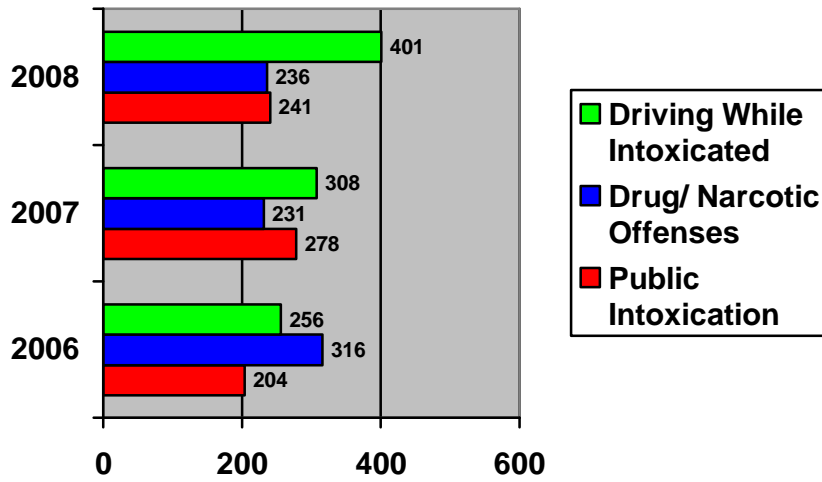
## 2008 Arrest Charge Breakdown



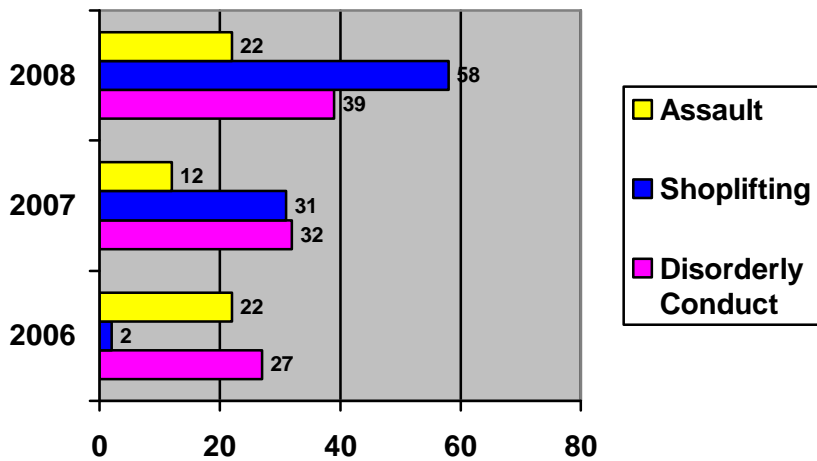
People age 17 and over are considered adults under Texas state law. Felony charges count for 9 percent of all the charges filed on adults and 6 percent of the charges filed on juveniles. Multiple charges may be tied to a single arrest and/ or multiple people be attached to a single charge.

# Sample Charges

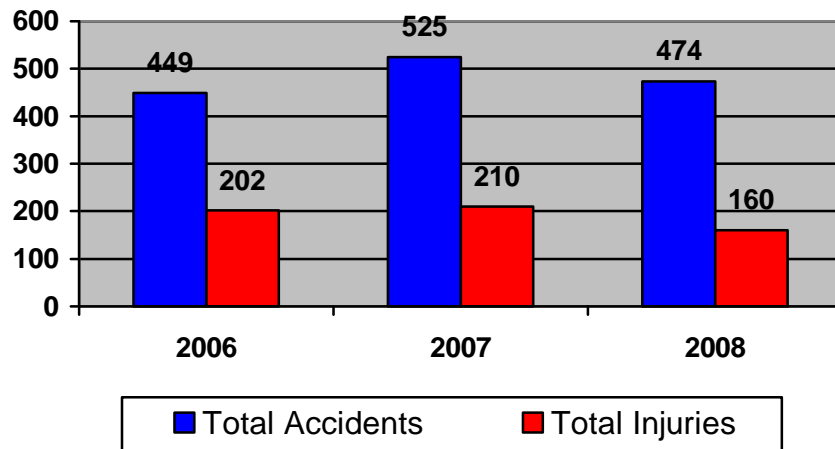
## Adults



## Juveniles



## Traffic Accidents

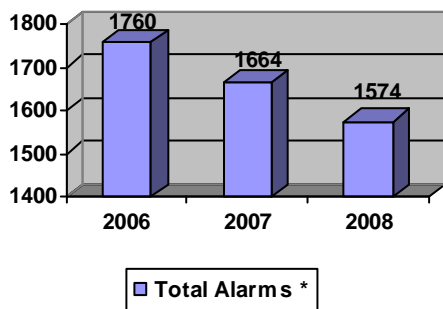
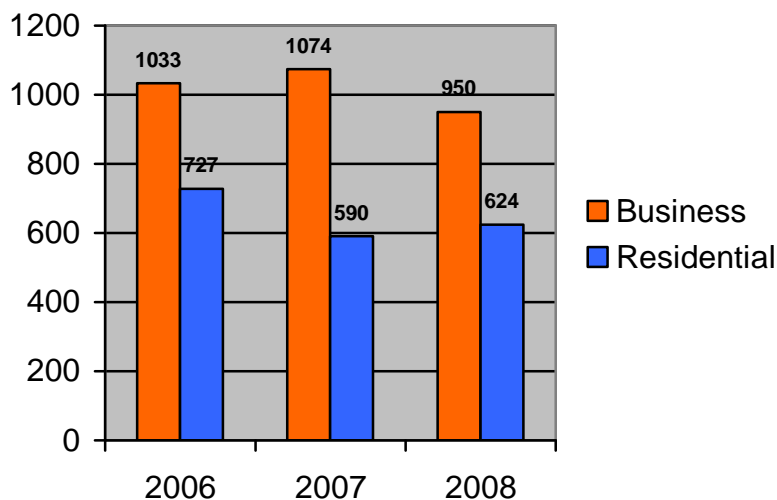


### Most Frequent Accident Locations - 2008

- Railroad Ave @ Robin (17)
- Center Street @ Pasadena Blvd (14)
- Center Street @ Hillshire (9)
- Center Street @ P Street (8)
- Luella Ave @ Pasadena Blvd (8)
- South Battleground @ SH225 (7)
- South Battleground @ E Thirteenth (6)
- Center Street @ Thirteenth (6)
- Center Street @ Lambuth (6)
- East Boulevard @ E Thirteenth (5)
- East Boulevard @ E San Augustine (5)
- East Boulevard @ E Pasadena (5)
- Pasadena Blvd @ Georgia (5)

An accident can occur on any day, at any time. In 2008, the most common time of day for an accident to occur was between 5:00 p.m and 6:00 p.m; 52 accidents happened during this hour. The most common day of the week for an accident to occur was on a Friday; 87 accidents occurred on this day. Officers of the Deer Park Police Department respond to all accidents, regardless of whether or not there are injured persons. Factors such as location, damage amount, and injuries determine if an accident is reportable to the state and/or if a written accident report needs to be prepared by the responding officer. Accidents involving seriously injured persons and/or fatalities are further investigated by specialized Accident Investigator and Accident Reconstruction Officers.

## Alarm Calls



### Percentage change in total alarm calls

2006 - >1% increase over previous year  
 2007 - 5.5% decrease from previous yr  
 2008 - 5.4% decrease from previous yr

\* Total does not include "Fire Alarms"

Alarm calls are typically the most frequent type of incident to which the Deer Park Police Department officers respond. Not including fire alarm calls, there was a total of 1,574 alarm calls accounting for 8% of all calls for service during the year.

The overwhelming majority (1,569) of alarms in 2008 resulted in a "No Report" disposition, indicating the alarm was false or unfounded.