

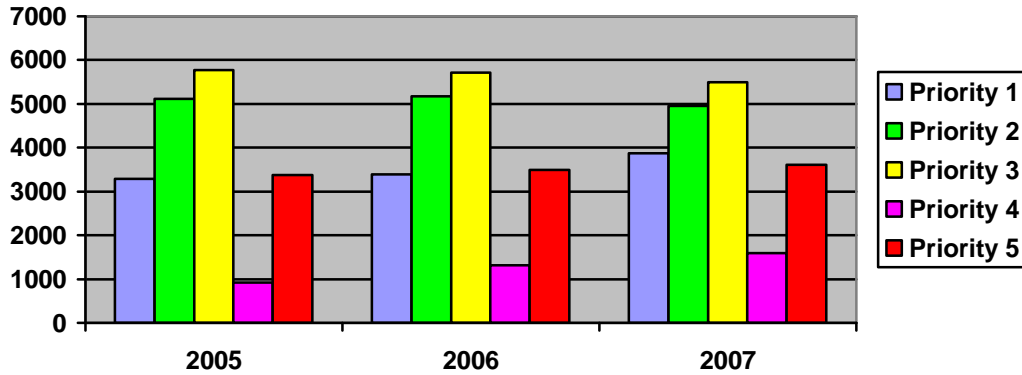
## Calls for Service

Total Calls for Service:

2005 – 18,481

2006 – 19,122

2007 – 19537 (2.2% increase over 2006)



Examples:

Priority 1: Officer needs assistance; Major accidents; Crimes “in progress”

Priority 2: Prowlers; Alarms

Priority 3: Noise disturbances; Minor accidents

Priority 4: Barking dogs; Speeding vehicles; Not “in progress” crimes

Priority 5: Keys locked in a vehicle

Changes **in the number of calls for service** in 2007 compared to 2006 are as follows:

Priority 1: 14% **increase**

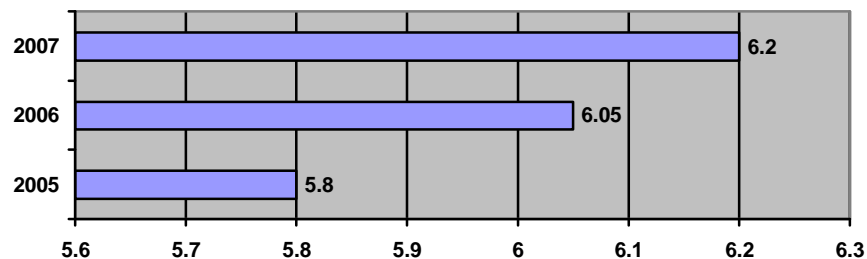
Priority 2: 4% **decrease**

Priority 3: 4% **decrease**

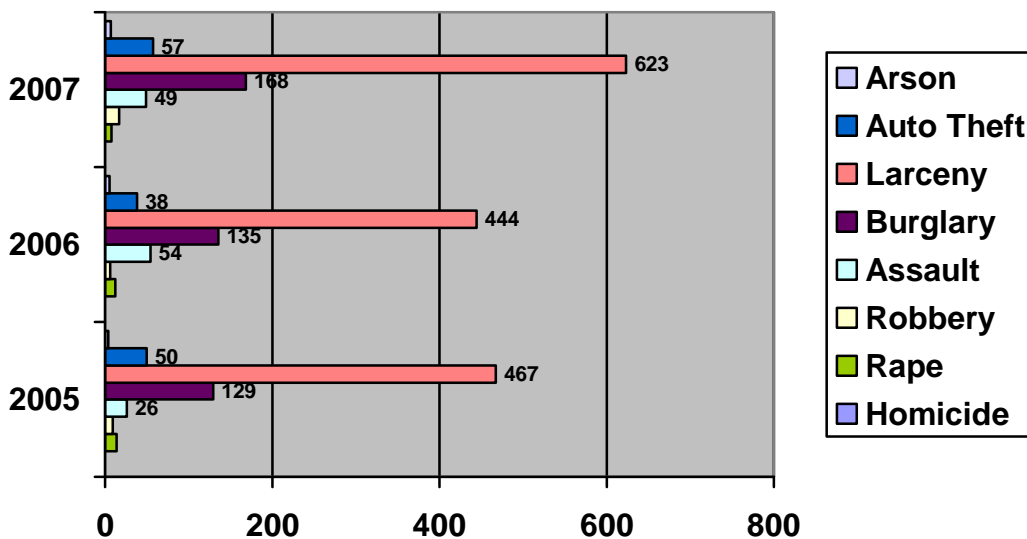
Priority 4: 20% **increase**

Priority 5: 3% **increase**

## Response Time in Minutes (Priority 1 Calls only)



## Part I Offenses

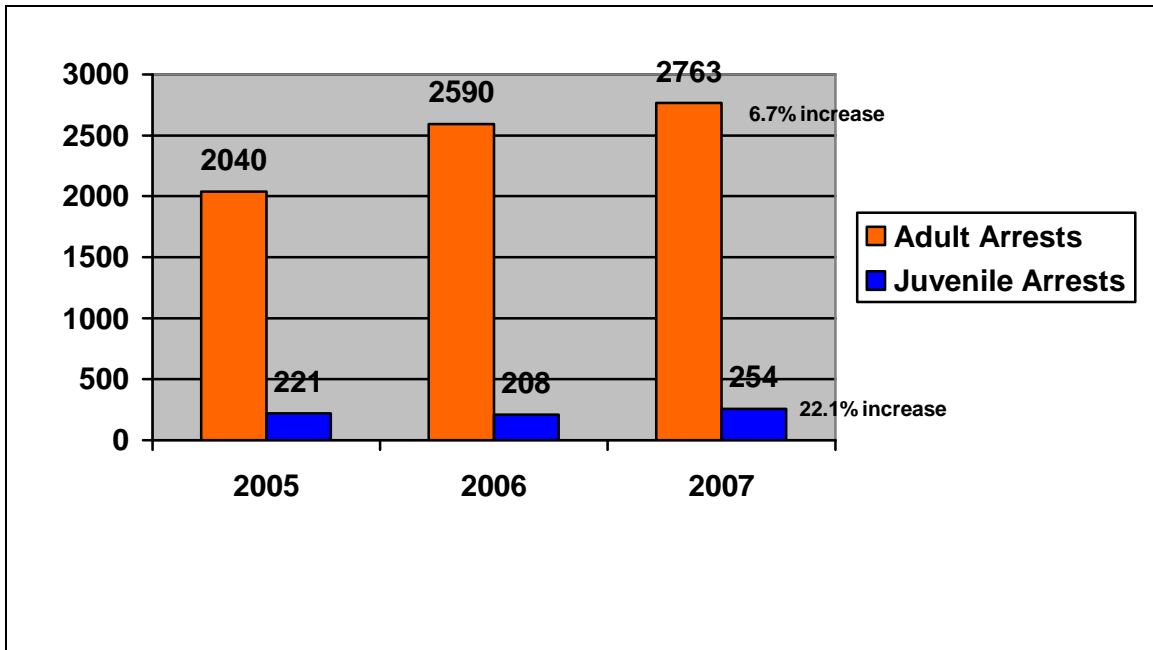


### 2007 Totals & Percentage of Change from 2006

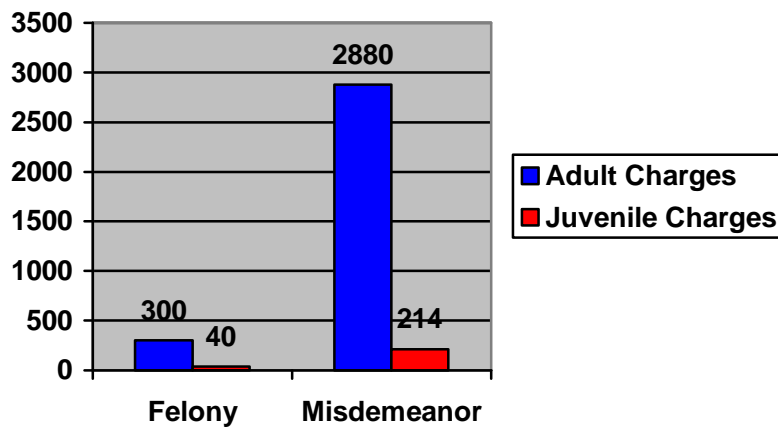
|            |     |               |
|------------|-----|---------------|
| Arson      | 7   | 40% increase  |
| Auto Theft | 57  | 50% increase  |
| Larceny    | 623 | 40% increase  |
| Burglary   | 168 | 24% increase  |
| Assault    | 49  | 9% decrease   |
| Robbery    | 17  | 183% increase |
| Rape       | 8   | 33% decrease  |
| Homicide   | 0   | 100% decrease |

Part I Offenses are the eight offenses reported monthly to the Texas Department of Public Safety. The figures are then forwarded to the FBI for analysis. Finally, the statistics are published in a catalog titled "Crime in the United States" which is compiled by the United States Department of Justice and disseminated annually to all criminal justice agencies within the United States.

## Arrests



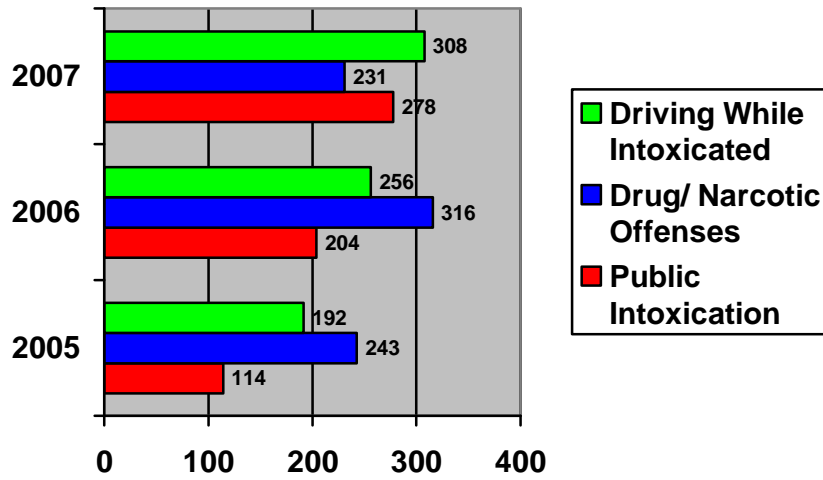
## 2007 Arrest Charge Breakdown



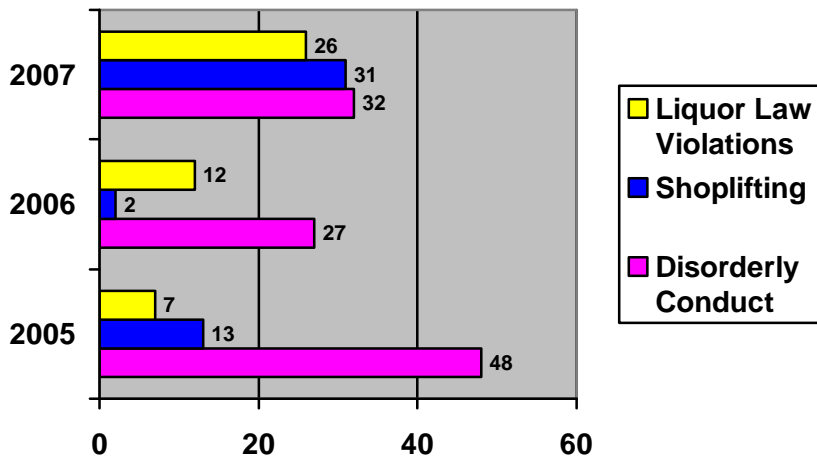
People age 17 and over are considered adults under Texas state law. Felony charges make up a little over 9 percent of the charges filed on adults and almost 16 percent of the charges filed on juveniles. Multiple charges may be tied to a single arrest and/ or multiple people be attached to a single charge.

# Sample Charges

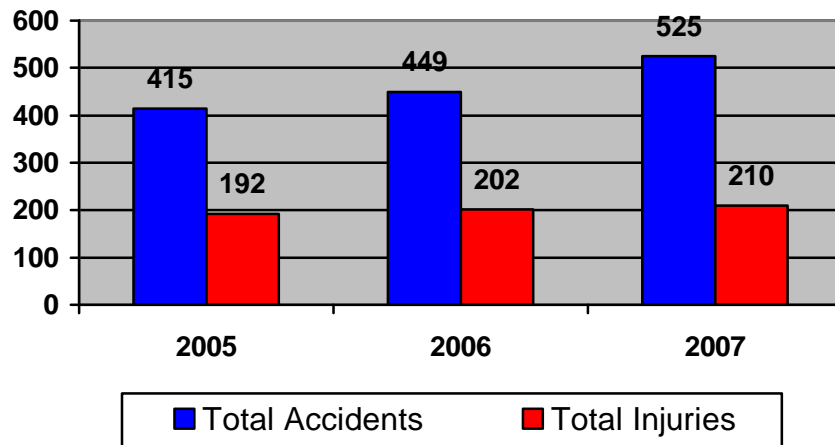
## Adults



## Juveniles



## Traffic Accidents

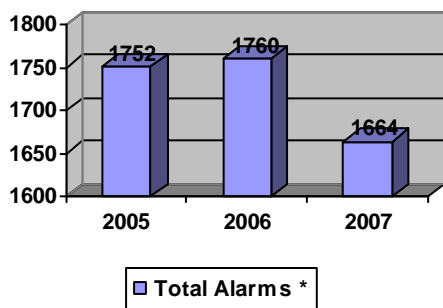
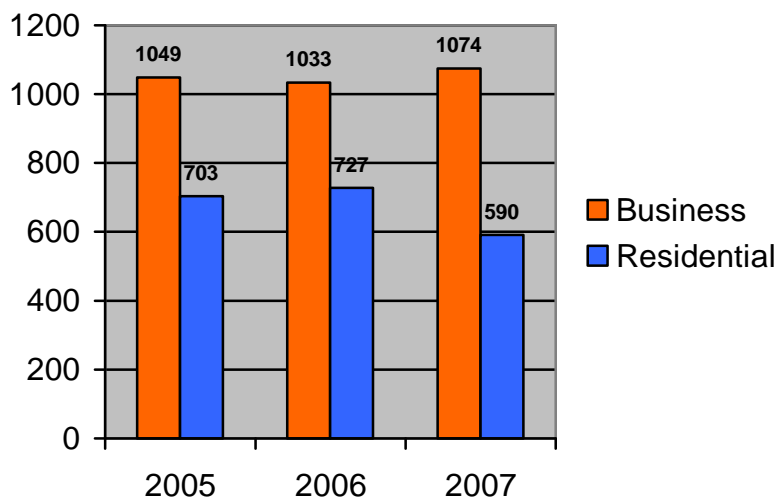


### Most Frequent Accident Locations - 2007

- Center Street @ Hillshire (15)
- Center Street @ X Street (13)
- Center Street @ P Street (11)
- Georgia Ave @ Pasadena Blvd (10)
- Center St @ Pasadena Blvd (9)
- Center St @ Lambuth (9)
- Luella Ave @ Pasadena Blvd (8)
- Center St @ San Augustine (6)
- East Boulevard @ E Thirteenth (6)
- Center St @ Thirteenth (5)
- East Boulevard @ E Pasadena (5)
- Railroad Ave @ Robin (5)

An accident can occur on any day, at any time. In 2007, the most common time of day for an accident to occur was between 2:00 p.m. and 3:00 p.m. and then again between 5:00 p.m. and 6:00 p.m. The most common day of the week for an accident to occur was on a Wednesday; 99 accidents occurred on this day. Officers of the Deer Park Police Department respond to all accidents, regardless of whether or not there are injured persons. Factors such as location, damage amount, and injuries determine if an accident is reportable to the state and/or if a written accident report needs to be prepared by the responding officer. Accidents involving seriously injured persons and/or fatalities are further investigated by specialized Accident Investigator and Accident Reconstruction Officers.

## Alarm Calls



### Percentage change in total alarm calls

2005 – 5% increase over previous year  
 2006 - >1% increase over previous year  
 2007 – 5.5% **decrease** from previous yr

\* Total does not include “Fire Alarms”

Alarm calls are typically the most frequent type of incident to which the Deer Park Police Department officers respond. In 2007, there was a total of 1,664 alarms accounting for over 8.5% of all calls for service during the year.

The overwhelming majority (1,652) of alarms in 2007 resulted in a “No Report” disposition, indicating the alarm was false or unfounded.